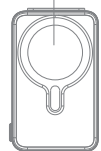


Power bank user manual
USB output portable power bank

Please read the manual carefully before use.



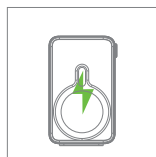
MagSafe wireless charge



Technique Specification

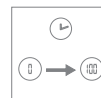
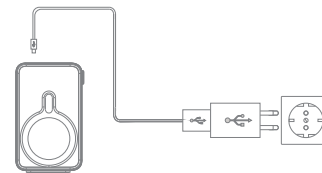
Model: W100PD
Polymer Battery: 3.8V/10000mAh; 38Wh
Type-C Input: 5V/2A, 12V/1.5A; 18W Max.
Lightning Input: 5V/2A, 12V/1.5A; 18W Max.
Type-C Cable Input: 5V/2A, 12V/1.5A; 18W Max.
Type-C Cable Output: 5V/2A, 9V/2.22A, 12V/1.67A; 20W Max.
USB-A Output: 5V/2A, 5V/4.5A(fast charge), 9V/2A, 12V/1.5A; 22.5W(Max)
Wireless Charger Output: 9V/1.66A, 15W Max.
Total Output: 5V/3A
Dimension: 71.5*115*20mm
Weight: 213g

① Type-C Cable Input



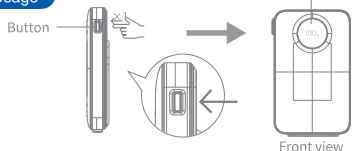
Charging power bank

② Type-C Input

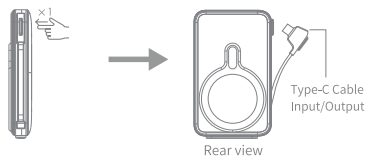


The digital screen lights on when the power bank starts to charge. The digital screen shows the number of actual power percentage from 0% ~ 100%.

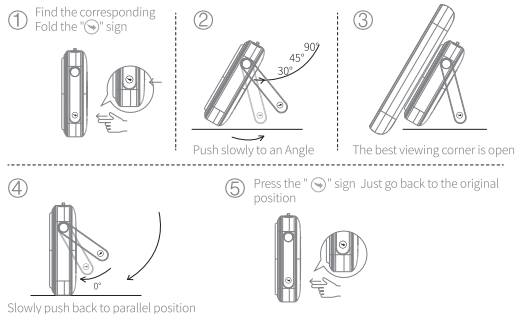
Button Usage



Pull Out Line



Support folding procedure



Caution

- ⚠ Avoid to use or store in a damp, rainy or hot environment for a long time. Avoid explosion. (Working temperature: Charging 0~45°C, discharging -10°C to 60°C, storing -20°C to 60°C).
- ⚠ It is strictly prohibited to put the products into water or clean by wet cloth to avoid the leakage or short circuit.
- ⚠ Avoid any covering, or put things on products to avoid influencing the products cooling.
- ⚠ Avoid using the products without watching.
- ⚠ Don not disassemble, the product doesn not equip with any parts for change.
- ⚠ Don not drop, shaking, drub, strike, squeeze this product.
- ⚠ Don not make the positive and negative of the product input or output short circuit, to avoid equipment or external objects burning.

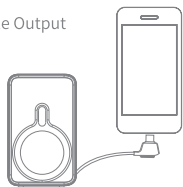
Caution

- ⚠ Please place the product out of reach of children.
- ⚠ To avoid any damage, charging problem or smoking, burning risk caused by overload, please use the original charger, that the rated output can match power bank input index (Original charger with 3C certification)
- ⚠ Please remove the charger once power bank is fully charged
- ⚠ Once there is smell, burning hot, color-changing, distortion, or leaking during the power bank working, please stop using it immediately; if battery liquid fall on the skin by accident, please wash the skin by water immediately and see a doctor if necessary.
- ⚠ Dispose your unused power bank properly.

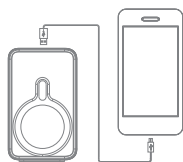


Charging mobile phone

① Type-C Cable Output



③ USB Output



② Wireless Charger Output



If the power bank is discharging, the LED screen will start to flash and show the power capacity percentage. The LED light stop flash when it is fully charge with 100% power capacity.

Tips

Daily using can make power bank in a best status.
If long time lay aside, please keep 50% capacity and charging every 3 months.
Any products should be used in a safe environment, especially electronic product, pay attention to safe use of electricity.

